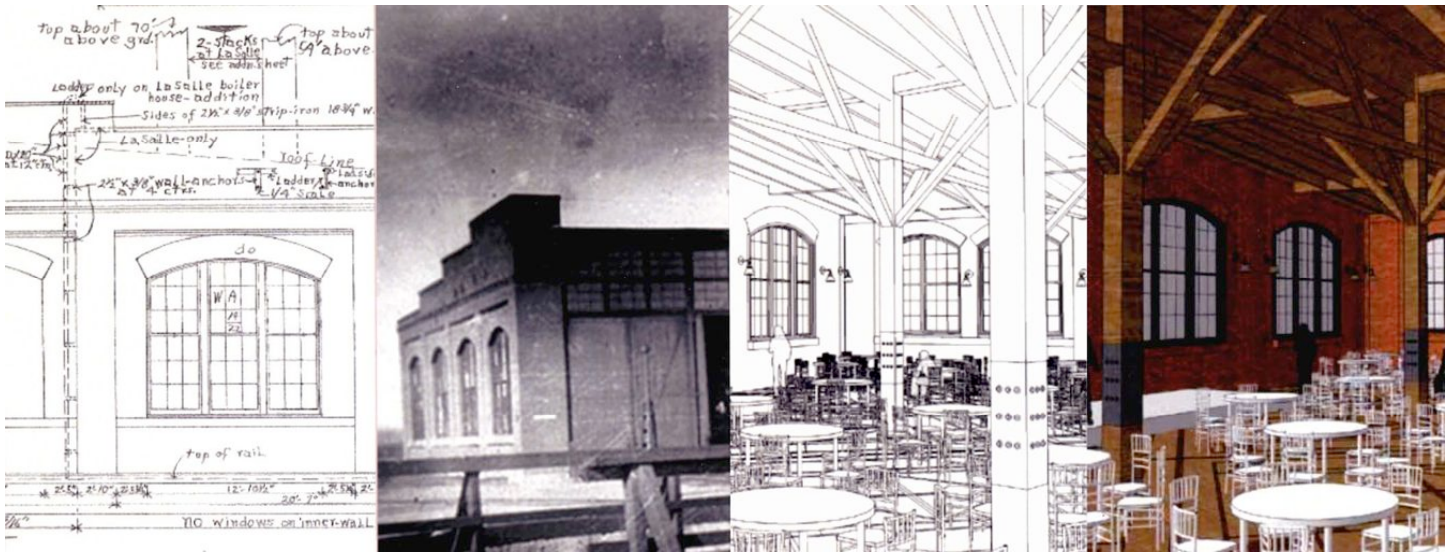


RPI Hot Shot

Roundhouse Preservation, Inc. * Hot Shot=Train with very high priority compared to other trains. February 20, 2013



These photos graced the cover of the interior design concepts and master plan for the Union Pacific Railroad Roundhouse at Hugo. The plan projects a large events center and railroad museum in the century-old structure. Created by designer Natalie Ann Lynch of Pridian Design Group, Fort Collins, CO, the plan can be reviewed at the annual meeting.

2013 RPI Annual Meeting March 10

The 2013 Annual Meeting of Members of Roundhouse Preservation, Inc. will be at the former Hugo depot in Hines Park on Sunday, March 10, 2013 at 2 p.m.

At this meeting, members will renew memberships, elect RPI board directors and complete any other business. Board terms currently served by Carroll Schroeder and Terina Ensign are expiring; Schroeder has indicated he does

not seek re-election.

Following the business meeting, Bob Owens will present the program on model railroading.

Born in 1939, Owens was just the right age to remember the last of the steam engines and the first generation diesels in the late 1940s and into the mid-50s. He's been interested in trains all his life, but his various careers (spanning service in the U.S. Air Force,

several jobs in aerospace firms, and a half-dozen of his own companies over the years, ranging from medical x-ray imaging to a quarter horse ranch in Kansas to a real estate brokerage in California) limited the time he could spend on hobbies.

Model railroading is one of his many interests. For RPI members, he'll describe the many different aspects of model railroading, and he'll show a video from the Greeley Freight Station Museum that explains how a variety of interests and skills can weave together into a truly magnificent and very believable model railroad.

The meeting is open to the public.

“Model Railroading— A Different Kind of Animal.”

Presented by Bob Owens
March 10, 2013, 2 p.m.
Hugo U. P. Depot at Hines Park



Work on the doors and windows on track again

Here it is a year later and we still don't have the doors and windows in the roundhouse.

The contracts with the State Historical Fund (SHF), Martin/Martin Consulting Engineers and Historical Architect Merrill Wilson were all signed, but things stalled last summer and fall. Fortunately, we're on the move again!

Some issues needed to be addressed concerning emergency exits and whether all of the bay doors would be

operable. Since the number of exits already existing in the roundhouse was adequate to meet fire codes, we didn't have to add more. Further, it was decided to have all of the bay doors be operable. With these decisions, the Scope of Work with the SHF didn't have to be amended, thus saving some time.

As members of RPI we have certainly learned about patience and perseverance, so maybe 2014 is the year that we will see the roundhouse fully enclosed.

President's Message

Dee Ann Blevins, President

This year has zipped right along! It was a good year for RPI and one of regrouping and refocusing for the board of directors.

There have been a couple of very exciting events for the roundhouse. 1. We received a donation of two (and possibly three) railroad cars for the museum and 2. We hired Pridian Design Group to help us arrange the roundhouse space for use as a museum and events center.

Daniel Quiat is the generous donor of the rolling stock. The 50-ton flat car was built in 1941 and has the slogan "Route of the Streamliners" on one side and "Serves the West" on the other. The mechanical refrigerator car was built in 1958 and was recently repainted. If we have room, Quiat is willing to donate a switch engine currently located in Strasburg, Colorado. Thank you Daniel!

Pridian Design Group, under the leadership of architect Mike Tupa, designed a great, flexible plan for the roundhouse. Check it out at our Annual Meeting, March 10, 2013.

The board is always looking for more fundraising ideas. It is important to diversify and have a variety of

things to generate revenue without always being so labor intensive. Our dinners are by far the best source of revenue, and we couldn't do them without our chef, Carroll Schroeder. We tried a steak dinner this past year and a dance. We had many good volunteers to set up, serve, wash dishes and clean up. Many volunteers were teenagers, and they were hard workers for this successful event!

We hope to bring back our fish fry this month. So watch for information on our website and Facebook, and possibly in this newsletter!

I can't say enough about Lincoln County's Tourism Board. It is proactive in supporting tourism and helping organizations promote events and often providing funds for these events. The train module, the brain-child of the tourism board, represents Lincoln County's historical sites and has traveled all over the state. Many people were unaware of the treasures in eastern Colorado. Recently the Tourism Board provided training for an online calendar called Post and Promote. This tool will help the entire county know what is happening within all the organizations that participate, so we can work together

on scheduling events. RPI has received financial help from the board on two occasions and will most likely need its help when we move the two cars from Denver to Hugo.

The latest grant is for the roundhouse windows and doors. Typical of construction projects, the timeline never begins as early as we want and it takes longer than we think! But the project will be starting soon.

I invite you to stay in touch with us, either in person or through the Internet. RPI is trying to embrace digital and social media with the confidence of our youth. RPI is just 11 years old, but most of us on the board are a bit old-school! I can say that without apology. We are who we are and we're doing the best we can with the skills we have. My fellow board members have worked hard and I thank each of them for the gifts they bring to our preservation efforts! I also send my thanks to each of you who have renewed your membership in RPI or who have found a few extra coins in the bottoms of your pockets and have sent them our way. We appreciate your continued support.

Meet Daniel Quiat

A 4th generation Coloradoan, Daniel Quiat got his first railroad experience building track on the Georgetown Loop in 1984. He also built track displays at Rocky Point

near Boreas Pass, on Boreas Pass and at Breckenridge, and assisted on Kenosha Pass.

He started saving railroad equipment for preservation in 1987 with

narrow gauge equipment he found in Alaska that was from Colorado. He worked with the Town of Breckenridge and the Forest Service to create displays using the equipment he'd saved, including the Rotary Snowplow display in Breckenridge and the box-car display at Boreas Pass. He received a Colorado Preservation Inc. "Statewide Preservation Award" for the creation of the Rotary Snowplow display, along with awards of appreciation from the Pike National Forest and the Town of Breckenridge.

Quiat started saving standard gauge equipment in 1995. To date, he has been able to include 22 pieces of railroad equipment on the Colorado State Register of Historic Properties. Equipment is primarily from the Rio Grande, but also includes the Denver & Salt Lake Railway and the Union Pacific.

He received the Stephen H. Hart Award from the Colorado Historical Society for railroad preservation in 2004.

Daniel Quiat started the "Museum of Railway Workers" in April 2001. The museum has equipment on display in Colorado Springs in conjunction with the Pikes Peak Trolley Group, but Quiat hopes to find a spot in the Denver area as well.



This 1958 refrigeration car and a 1941 railroad flat car recently were donated to Roundhouse Preservation, Inc. for display at the Hugo Union Pacific Railroad Roundhouse in years to come. Donor Daniel Quiat said the cars were purchased from the scrapper in the summer of 2008. "I am happy to see them go to a home where there is such support and enthusiasm for the preservation of railroad history," he added.



Come to Carroll Schroeder's fish fry!

**Friday, March 22, 2013, 5 to 7 p.m.
(or until the fish supply gives out!)**

**at the Joe Will Post #6612, VFW
419 4th Avenue, Hugo, CO**

\$10 for adults \$5 for children 10 and younger

No tickets sold in advance; first come, first served!

(Proceeds help RPI match our restoration grants.)

100 years ago

Reprinted from the
Hugo Range Ledger, 1913

=====

The Union Pacific has a crew of workmen here excavating for a sewer to connect the roundhouse and depot, and the outlet will be down near the stock yards in Big Sandy.

— July 5, 1913

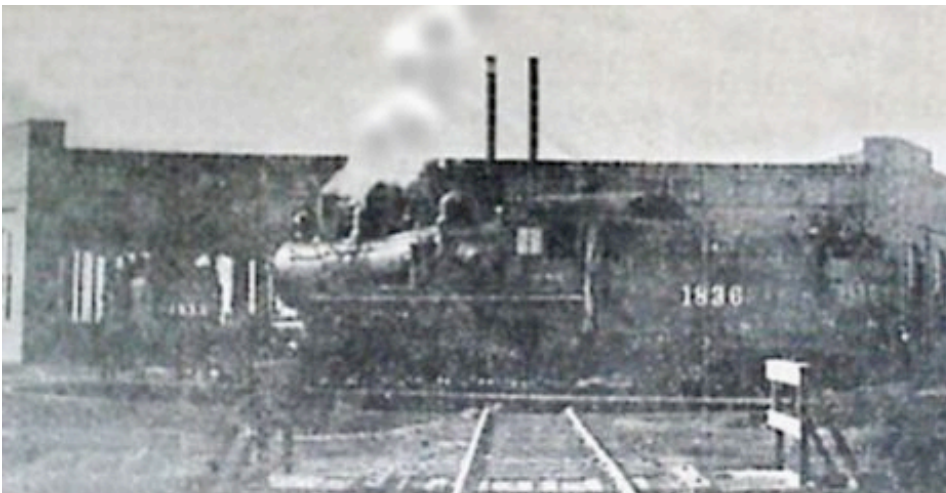
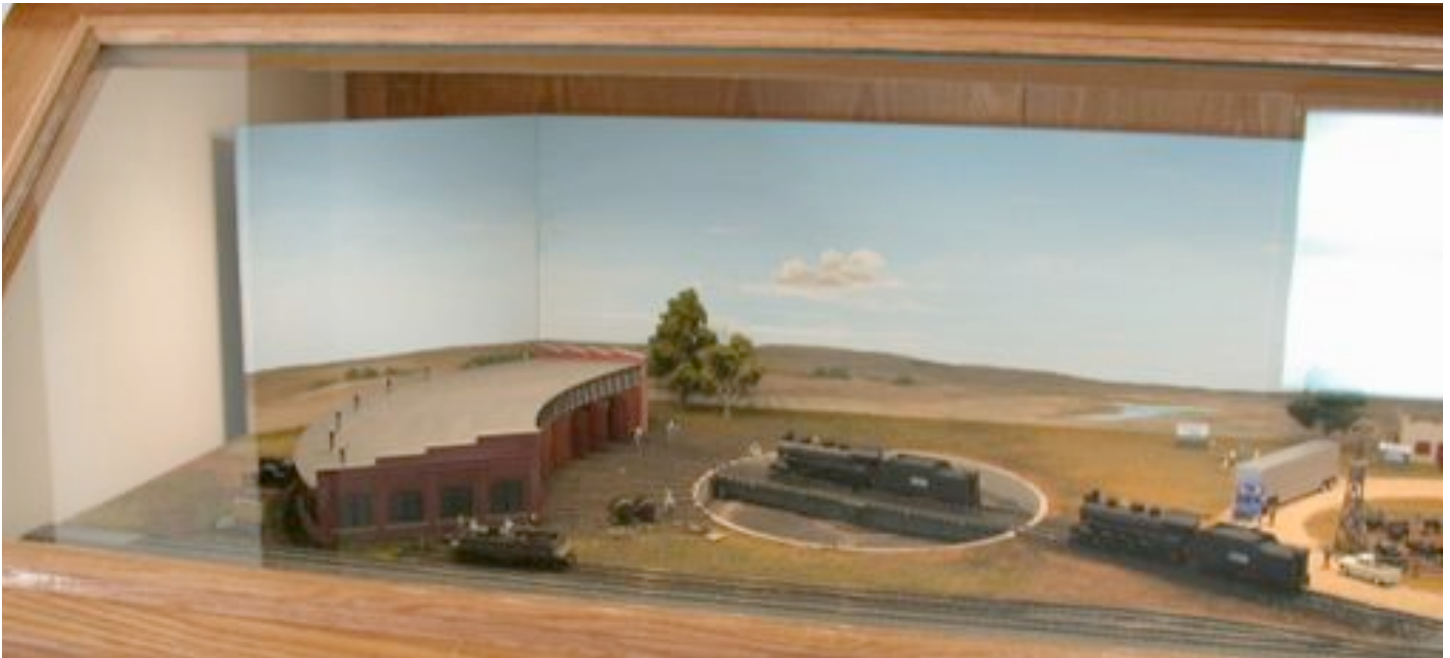


Lincoln County Tourism Railroad Module

... Our History in Miniature

The Design Team

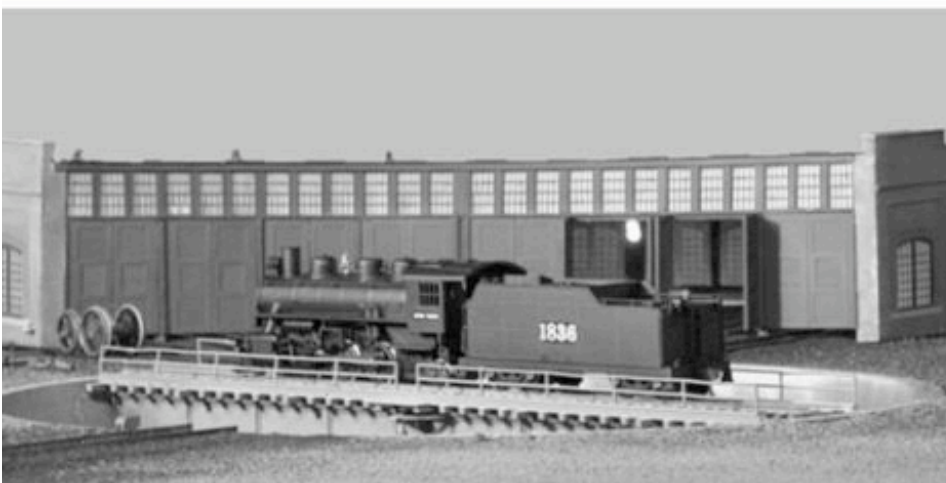
Carl Lavery Don Bailey D. Attig Kris Blackmarr Ray Hoppes Chris Fox Lowell Ross OJ Rivas



The roundhouse goes on the road

This HO-scale diorama module of some of the historical sites in Lincoln County, including the Hugo Roundhouse, was commissioned by the Lincoln County Tourism Board.

Chris Fox assembled the team that developed the module, which is an operating HO module that can go on tour with other modular railroad clubs, serving as an ambassador for Lincoln County tourism. Also, when not on tour, the module resides in the Lincoln County Courthouse lobby in its museum quality display case.



The model roundhouse was built to match the original building's look c. 1940, but it still works well posing with an HO model of Locomotive #1836 (lower left). The top photo shows 1836 as the first engine into the new roundhouse in 1909.